

Specifications:



Air Driven Tube Cutter

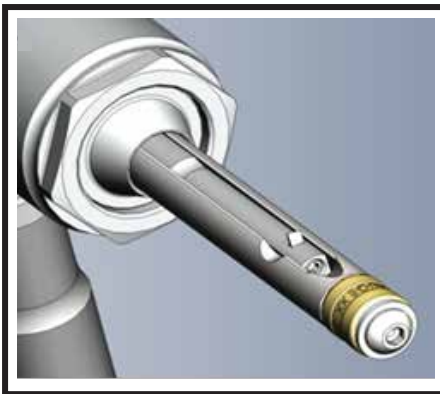
The NEW C0600

The new C0600 lever actuated cutter was developed by PSR to internally cut non-ferrous and ferrous tubes within condensers, chillers and similar vessels with unmatched speed. When furnished with a powerful 1,000 rpm air motor brass and copper alloy tubes are cut within a few seconds and with minimal effort.

Furnished with a 375 rpm motor and using cobalt-base superalloy bits stainless steel and carbon tubes are cut 2 to 3 times faster than traditional cutters using slower rpm motors.

The air motors are interchangeable and quickly connect to the main cutter assembly providing versatility and eliminating the need invest in multiple cutters to handle broad range of alloys.

The C0600 saves time and reduces tooling and labor cost and complements our other tube removal tools. We continue to improve our designs to stay ahead of our competitors and insure our customers achieve the desired results with trouble free operation.



Cutter Mandrel Assy.



Interchangeable Air Motors

Simple to Use • Rapid • Cost Efficient



Power System Recovery
1482 East Valley Road- Suite 103
Santa Barbara, CA 93108

Tube Material Reference:

Model C0600-1000 (1000rpm):

Brass, Copper, Copper Nickel

Model C0600-375 (375 rpm):

Stainless Steel, Titanium, Inconel

Carbon Steel

Also cuts all non-ferrous alloys

Technical and Performance Data:

Model C0606-1000 (1,000 rpm): 12-18 cuts/minute (varies with alloy & gauge)

Model C0606 -0375 (375 rpm) : 3-6 cuts/ minute (varies with alloy & gauge)

Tube Size Range: 3/4-1 inch OD

Tube Thickness Range: 16-22 gauge

Cutting Depth: 2 5/8 inches

Cutting Bit Wear Rate: 2,000 -3,000 tubes/bit

Consumable Parts: Cutting bit and tube pilot

Size Change Parts: See attached parts list

Time to Replace Bit/Pilot: 1 minute

Air Motors: 1HP with D style handles

Air Requirement: 30 cfm/90 psi

Tool Adjustments: (1) Depth of bit cut thru the tube wall

Consumable Parts: Cutting bit and tube pilot

Tool Weight: 11.5/lbs

How It Works:

Step 1: Start air motor and bring cutter handle to rear position.

Step 2: Inset cutting mandrel until depth stop is against the tube.

Step 3: Move the handle slowly forward until tube is cut through.

Step 4: Retract the handle with motor still running.

Step 5: Withdraw the mandrel and proceed to the next tube. Continuous running of the air motor will enable the operator to have better control and more rapid operation of the tool.

Design Features:

Two-in-One Cutter: Same cutter housing is utilized to cut copper alloys at high speed and Stainless and titanium alloys at a lower speed by simply swapping air motors.

Easy Set Up: Changing cutter size change parts is simple and quick.

Improved Bit Wear: Using a bit fabricated out of super alloy (+ 80% cobalt, chromium, tungsten & misc. elements versa 15-25% for high speed tool alloys) stainless steels and titanium can now cut at much higher speeds, 2 to 3 times faster than with traditional cutters using standard high speed tool steel (HSS) bits.

Bit Depth Stop: Allows for depth of cut to be quickly adjusted.

Smooth Operation: Free spinning brass pilot, tapered tube stop, D- handle air motor, long lever-feed handle combine keep cutter centered and to eliminate wobbling and vibration

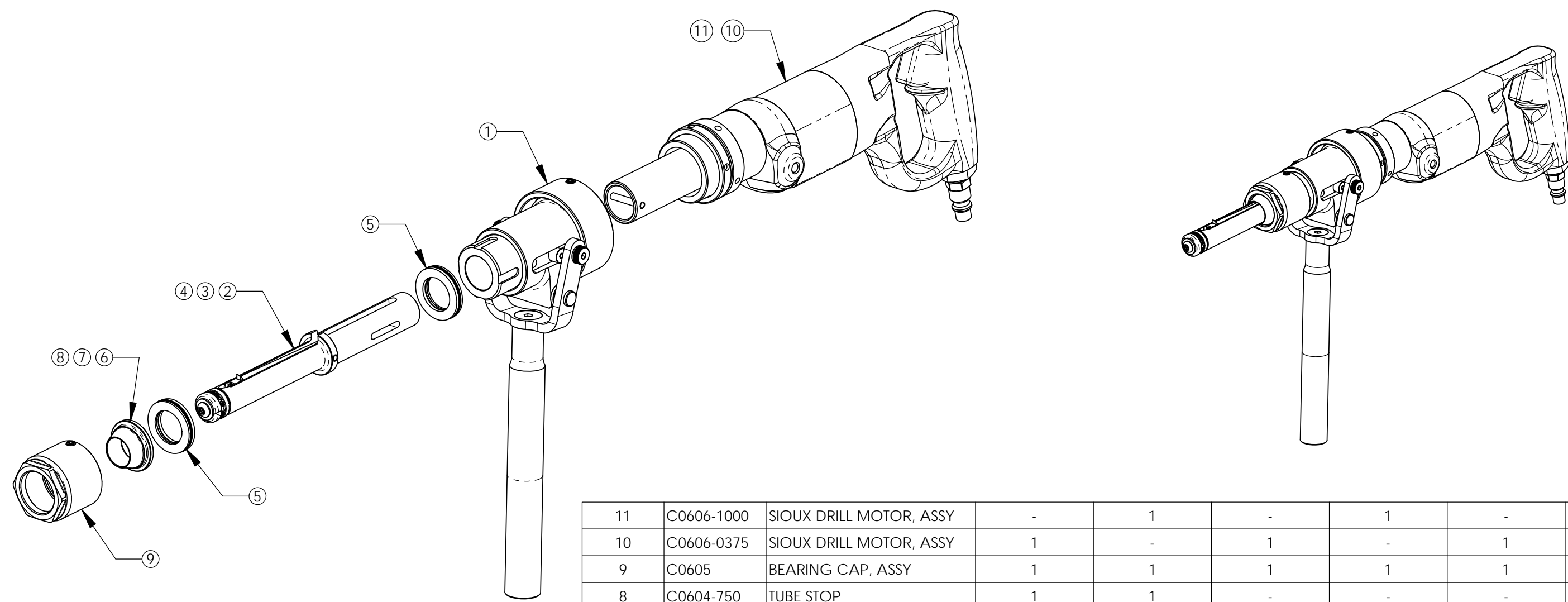
Easy Bit Replacement: Precision machined 5 sided slot with set screw in cutting bar allows for exact positioning and quick insertion of the operation balanced bit.



Complete Cutter Package

THE INFORMATION CONTAINED IN THIS DRAWING IS THE SOLE PROPERTY OF "Power Systems Recovery" ANY REPRODUCTION IN PART OR WHOLE WITHOUT THE WRITTEN PERMISSION OF "Power Systems Recovery" IS PROHIBITED.

REVISIONS			
REV.	DESCRIPTION	DATE	APPROVED
A	RELEASE	5/30/2014	F.S.



11	C0606-1000	SIOUX DRILL MOTOR, ASSY	-	1	-	1	-	1
10	C0606-0375	SIOUX DRILL MOTOR, ASSY	1	-	1	-	1	-
9	C0605	BEARING CAP, ASSY	1	1	1	1	1	1
8	C0604-750	TUBE STOP	1	1	-	-	-	-
7	C0604-875	TUBE STOP	-	-	1	1	-	-
6	C0604-100	TUBE STOP	-	-	-	-	1	1
5	C0603	THRUST BEARING ASSY	2	2	2	2	2	2
4	C0602-750	CUTTER MANDREL ASSY	1	1	-	-	-	-
3	C0602-875	CUTTER MANDREL ASSY	-	-	1	1	-	-
2	C0602-100	CUTTER MANDREL ASSY	-	-	-	-	1	1
1	C0601	MAIN HOUSING, ASSY	1	1	1	1	1	1
ITEM NO.	PART NUMBER	DESCRIPTION	-750-0375/QTY.	-750-1000/QTY.	-875-0375/QTY.	-875-1000/QTY.	-100-0375/QTY.	-100-1000/QTY.

NOTES: UNLESS OTHERWISE SPECIFIED
 1. IDENTIFY PER MIL-STD-130, BAG & TAG.

PARTS LIST			
UNLESS OTHERWISE SPECIFIED DIMENSIONS ARE IN INCHES TOLERANCES ARE: .X ±.060 .XX ±.030 .XXX ±.010		CAD GENERATED DRAWING, DO NOT MANUALLY UPDATE	
APPROVALS		DATE	
DRAWN J.G.S.		5/30/2014	
CHECKED F.S.		5/30/2014	
RESP ENG			
MFG ENG			
QUAL ENG F.S.		5/30/2014	
DO NOT SCALE DRAWING		SCALE 1:2	
APPLICATION		DWG. NO. C0600	
		REV. A	
		SHEET 1 OF 1	

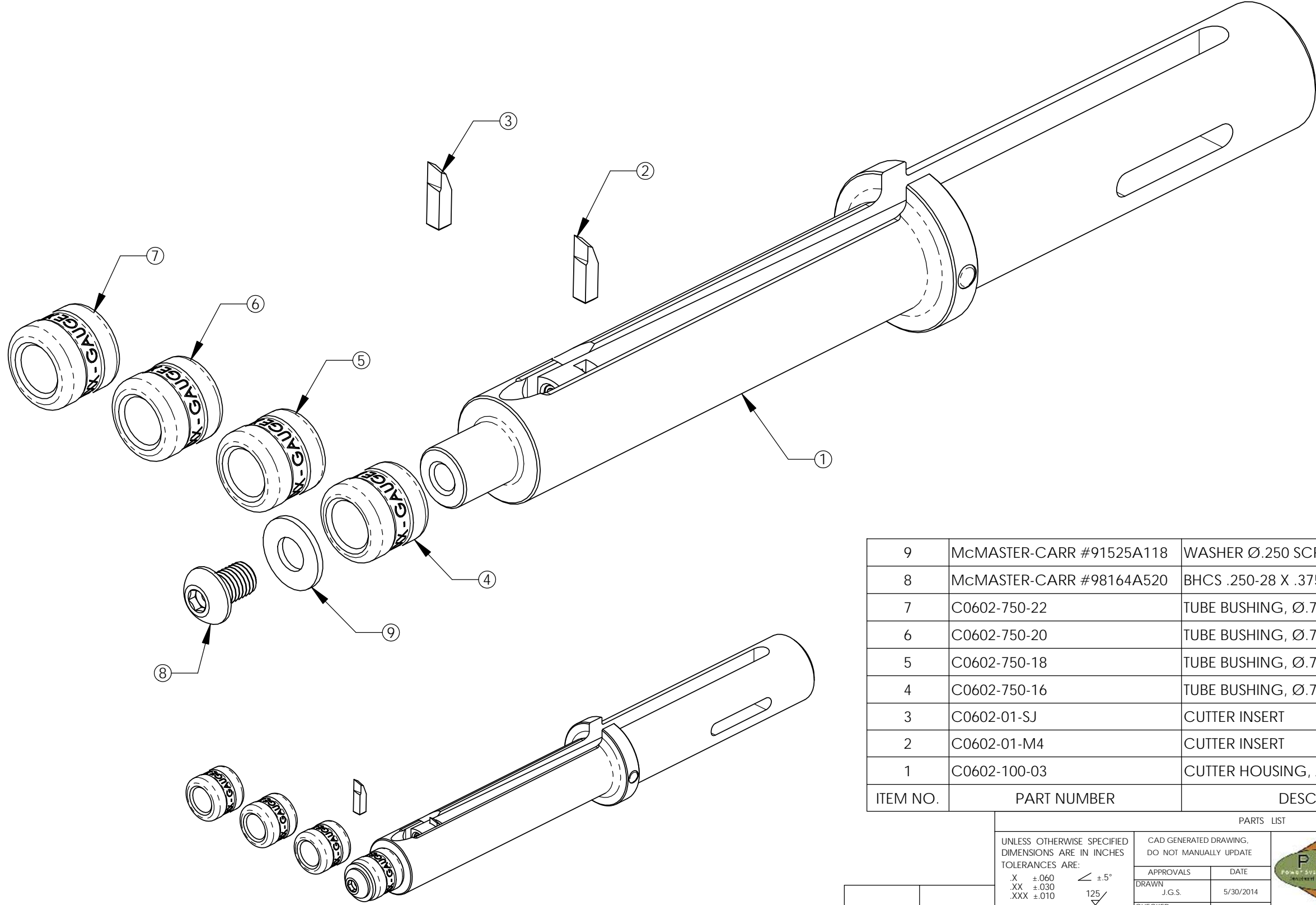


TUBING CUTTER, ASSY

SCALE 1:2 CAD FILE: TUBING CUTTER, ASSY SHEET 1 OF 1


THE INFORMATION CONTAINED IN THIS DRAWING IS THE SOLE PROPERTY OF "Power Systems Recovery" ANY REPRODUCTION IN PART OR WHOLE WITHOUT THE WRITTEN PERMISSION OF "Power Systems Recovery" IS PROHIBITED.

REVISIONS			
REV.	DESCRIPTION	DATE	APPROVED
A	RELEASE	5/30/2014	F.S.



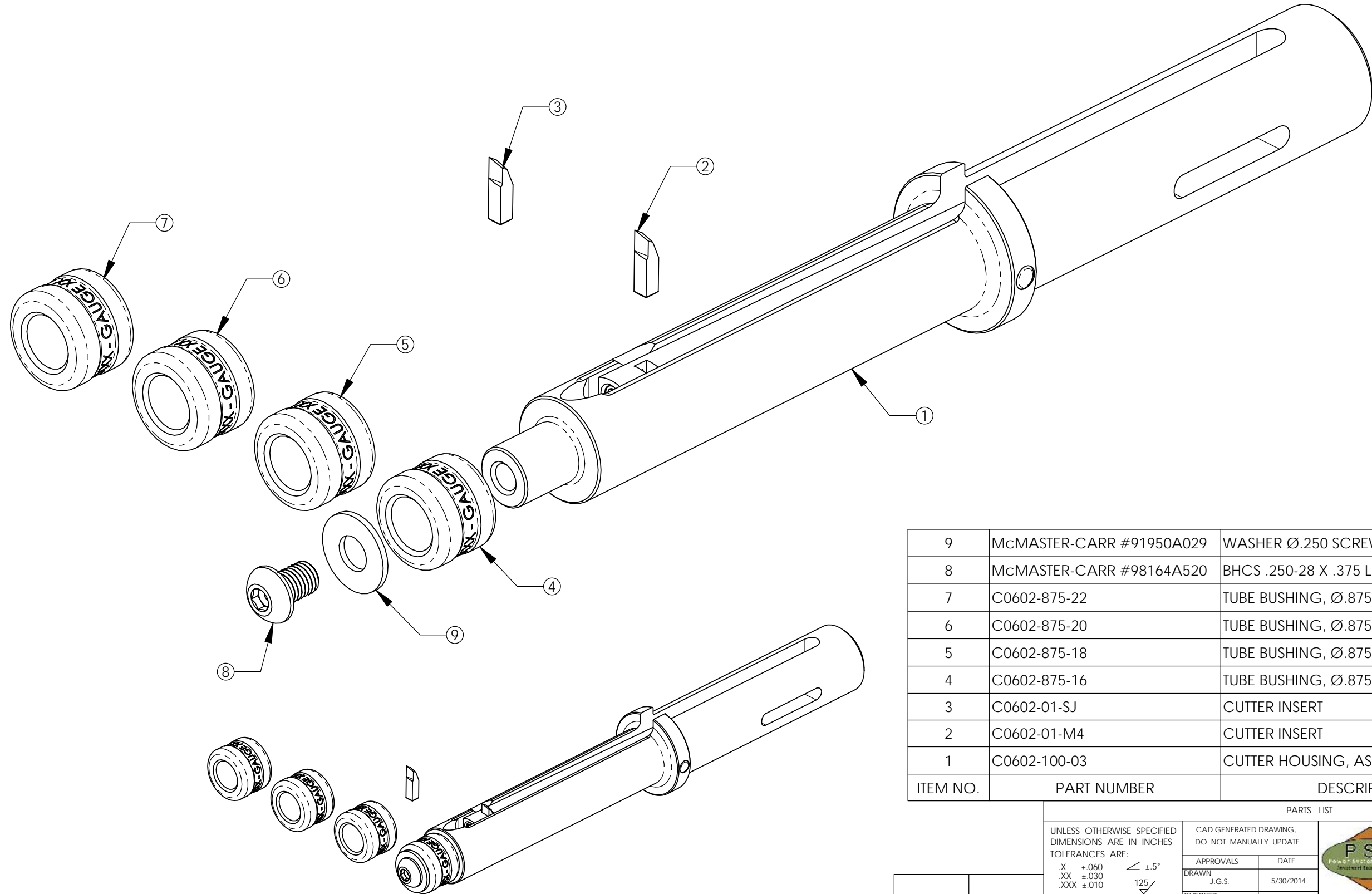
ITEM NO.	PART NUMBER	DESCRIPTION	QTY.
9	McMASTER-CARR #91525A118	WASHER Ø.250 SCREW	1
8	McMASTER-CARR #98164A520	BHCS .250-28 X .375 LONG	1
7	C0602-750-22	TUBE BUSHING, Ø.75 TUBE - 22 GAUGE	1
6	C0602-750-20	TUBE BUSHING, Ø.75 TUBE - 20 GAUGE	1
5	C0602-750-18	TUBE BUSHING, Ø.75 TUBE - 18 GAUGE	1
4	C0602-750-16	TUBE BUSHING, Ø.75 TUBE - 16 GAUGE	1
3	C0602-01-SJ	CUTTER INSERT	1
2	C0602-01-M4	CUTTER INSERT	1
1	C0602-100-03	CUTTER HOUSING, ASSY	1

NOTES: UNLESS OTHERWISE SPECIFIED
 1. IDENTIFY PER MIL-STD-130, BAG & TAG.

PARTS LIST			
UNLESS OTHERWISE SPECIFIED DIMENSIONS ARE IN INCHES TOLERANCES ARE: .X ±.060 .XX ±.030 .XXX ±.010		CAD GENERATED DRAWING, DO NOT MANUALLY UPDATE	
APPROVALS		DATE	
DRAWN J.G.S.		5/30/2014	
CHECKED F.S.		5/30/2014	
RESP ENG			
MFG ENG			
QUAL ENG F.S.		5/30/2014	
MATERIAL --		 www.powersystemsrecovery.com 1482 East Valley Rd, Suite 103 Santa Barbara, CA 93108	
FINISH --			
NEXT ASSY USED ON		CUTTER MANDREL ASSY SIZE B DWG. NO. C0602-750 REV. A	
APPLICATION DO NOT SCALE DRAWING		SCALE 9:7 CAD FILE: CUTTER MANDREL ASSY, Ø.750 SHEET 1 OF 1	


THE INFORMATION CONTAINED IN THIS DRAWING IS THE SOLE PROPERTY OF "Power Systems Recovery" ANY REPRODUCTION IN PART OR WHOLE WITHOUT THE WRITTEN PERMISSION OF "Power Systems Recovery" IS PROHIBITED.

REVISIONS			
REV.	DESCRIPTION	DATE	APPROVED
A	RELEASE	5/30/2014	F.S.



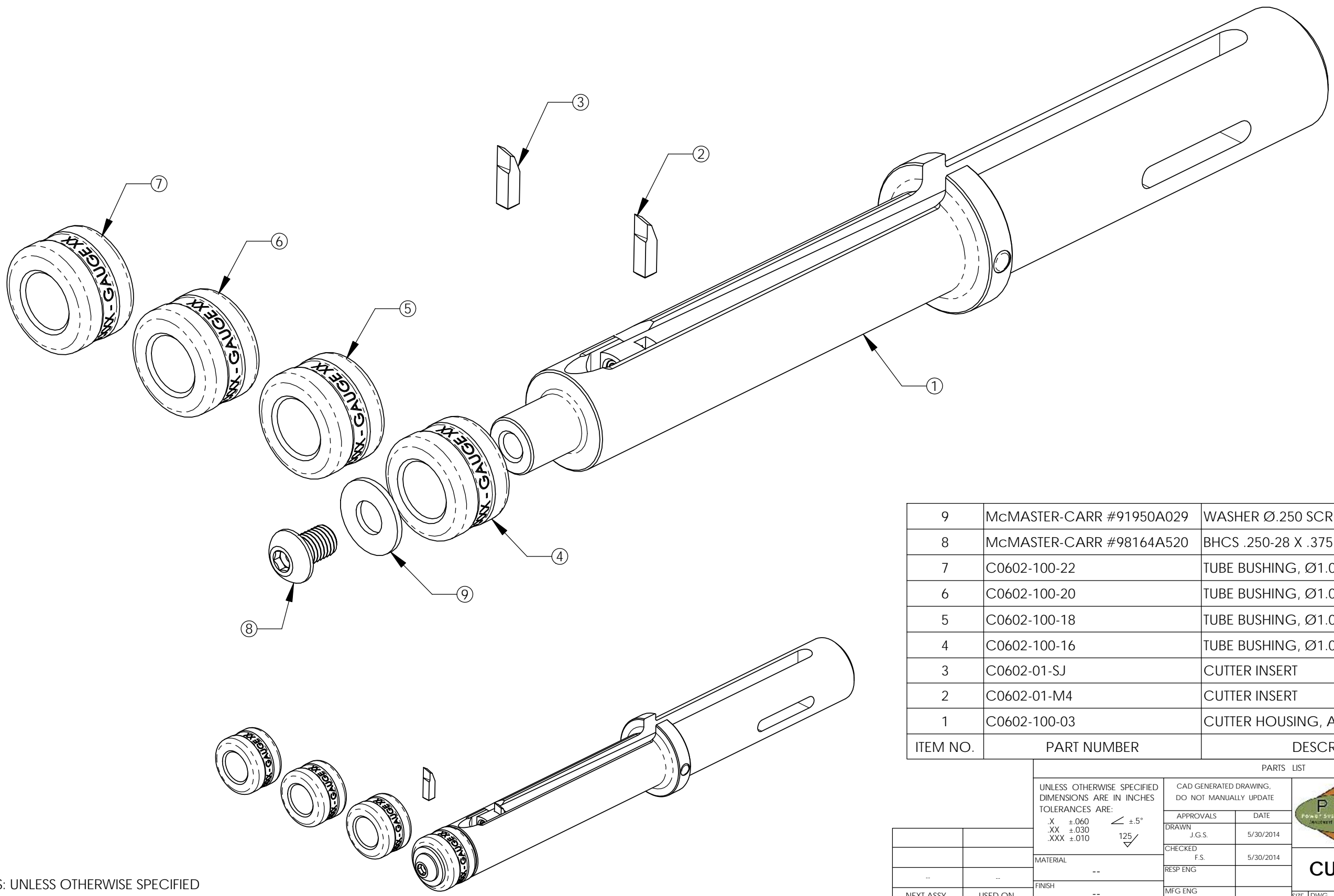
ITEM NO.	PART NUMBER	DESCRIPTION	QTY.
9	McMASTER-CARR #91950A029	WASHER Ø.250 SCREW X Ø.625 OD	1
8	McMASTER-CARR #98164A520	BHCS .250-28 X .375 LONG	1
7	C0602-875-22	TUBE BUSHING, Ø.875 TUBE - 22 GAUGE	1
6	C0602-875-20	TUBE BUSHING, Ø.875 TUBE - 20 GAUGE	1
5	C0602-875-18	TUBE BUSHING, Ø.875 TUBE - 18 GAUGE	1
4	C0602-875-16	TUBE BUSHING, Ø.875 TUBE - 16 GAUGE	1
3	C0602-01-SJ	CUTTER INSERT	1
2	C0602-01-M4	CUTTER INSERT	1
1	C0602-100-03	CUTTER HOUSING, ASSY	1

NOTES: UNLESS OTHERWISE SPECIFIED
 1. IDENTIFY PER MIL-STD-130, BAG & TAG.

PARTS LIST			
UNLESS OTHERWISE SPECIFIED DIMENSIONS ARE IN INCHES TOLERANCES ARE: .X ±.060 .XX ±.030 .XXX ±.010		CAD GENERATED DRAWING, DO NOT MANUALLY UPDATE	
MATERIAL --		APPROVALS	DATE
FINISH --		DRAWN J.G.S.	5/30/2014
NEXT ASSY USED ON		CHECKED F.S.	5/30/2014
APPLICATION DO NOT SCALE DRAWING		RESP ENG	
		MFG ENG	
		QUAL ENG F.S.	5/30/2014
		 www.powersystemsrecovery.com 1482 East Valley Rd, Suite 103 Santa Barbara, CA 93108	
		CUTTER MANDREL ASSY	
SIZE B	DWG. NO. C0602-875	REV. A	
		SCALE 9:7	CAD FILE: CUTTER.MANDREL.ASSY.Ø.875 SHEET 1 OF 1


THE INFORMATION CONTAINED IN THIS DRAWING IS THE SOLE PROPERTY OF "Power Systems Recovery" ANY REPRODUCTION IN PART OR WHOLE WITHOUT THE WRITTEN PERMISSION OF "Power Systems Recovery" IS PROHIBITED.

REVISIONS			
REV.	DESCRIPTION	DATE	APPROVED
A	RELEASE	5/30/2014	F.S.



ITEM NO.	PART NUMBER	DESCRIPTION	QTY.
9	McMASTER-CARR #91950A029	WASHER Ø.250 SCREW X Ø.625 OD	1
8	McMASTER-CARR #98164A520	BHCS .250-28 X .375 LONG	1
7	C0602-100-22	TUBE BUSHING, Ø1.00 TUBE - 22 GAUGE	1
6	C0602-100-20	TUBE BUSHING, Ø1.00 TUBE - 20 GAUGE	1
5	C0602-100-18	TUBE BUSHING, Ø1.00 TUBE - 18 GAUGE	1
4	C0602-100-16	TUBE BUSHING, Ø1.00 TUBE - 16 GAUGE	1
3	C0602-01-SJ	CUTTER INSERT	1
2	C0602-01-M4	CUTTER INSERT	1
1	C0602-100-03	CUTTER HOUSING, ASSY	1

NOTES: UNLESS OTHERWISE SPECIFIED
 1. IDENTIFY PER MIL-STD-130, BAG & TAG.

PARTS LIST			
UNLESS OTHERWISE SPECIFIED DIMENSIONS ARE IN INCHES TOLERANCES ARE:		CAD GENERATED DRAWING, DO NOT MANUALLY UPDATE	
.X ±.060	∠ ±5°	APPROVALS	DATE
.XX ±.030	125	DRAWN J.G.S.	5/30/2014
.XXX ±.010		CHECKED F.S.	5/30/2014
MATERIAL --		RESP ENG	
FINISH --		MFG ENG	
NEXT ASSY	USED ON	QUAL ENG F.S.	5/30/2014
APPLICATION	DO NOT SCALE DRAWING	 www.powersystemsrecovery.com 1482 East Valley Rd, Suite 103 Santa Barbara, CA 93108	
		CUTTER MANDREL ASSY	
SIZE B	DWG. NO. C0602-100	REV. A	
		SCALE 9:7	CAD FILE: CUTTER.MANDREL.ASSY_01.00 SHEET 1 OF 1